



# CONTENT

01

Who we are

02

Advantages

03

Products Introduction

04

Mission

## Brief Introduction ~ Kimtigo

- Focus on Storage more than 20 years
- Head Quarter is located in Shenzhen, 500+ employees, Worldwide sales network
- Kimtigo has a **complete chain of storage products** and covers **consumer, industrial control, enterprise, and embedded** storage products.
- **The TOP 3 Module Manufacturer & the TOP 4 DRAM Module Manufacturer in global**
- **300+ Intellectual Property, 200+ R&D employees, CNAS Lab**



New Kimtigo Head Quarter Building



Currently Factory

## Rank in the field Fast speed storage products and solution provider

### ■ Global Module Makers by Market Share for Channel-Market SSDs, 2020

Ranking	Company	Market Share
1	Kingston	27%
2	ADATA	8%
<b>3</b>	<b>Kimtigo</b>	<b>7%</b>

### ■ Global Module Makers by Market Share for Channel-Market DRAMs, 2020

Company	DRAM Rank		DRAM Income (Million USD)			DRAM Market Share (%)	
	2020	2019	2020	2019	YOY%	2020	2019
Kingston Technology	1	1	13200	12937	2.03%	78.02%	80.33%
ADATA Technology	2	5	540	366	47.45%	3.19%	2.27%
Ramaxel	3	2	526	474	10.92%	3.11%	2.94%
<b>Kimtigo</b>	<b>4</b>	<b>6</b>	<b>493</b>	<b>329</b>	<b>49.85%</b>	<b>2.91%</b>	<b>2.04%</b>

## Honor

### Qualification

- \*National High-Tech Enterprise
- \*Member of the Information Technology Application Innovation Working Committee of China Electronics Industry Standardization Technology Association
- \*ISO9001 /45001/14001 management system certification
- \*CNAS key laboratory certification
- \*Informatization and industrialization integration management system certification
- \*Vice Chairman Unit of Shenzhen Information Technology Application Alliance
- \*Executive Vice President Unit of Shenzhen Science and Technology Information Development Association

### Honor

- 2021 China IC Billboard Annual Emerging Shenzhen 2021
- Shenzhen Top 100 Brands
- 2021 "High-quality Development Leading Enterprise"
- Famous trademark of Guangdong Province
- The implementation unit of the integration of informatization and industrialization of the Ministry of Industry and Information Technology of the People's Republic of China



# CONTENT



Who we are



Advantages



Products Introduction



Plan & Mission

## Products Range

### Consumer Series

Products

Applications



Laptop



Desktop



Smart Phones



Wearable Devices



OTT



Vehicle System

### Industrial Series

Products

Applications



Computer Network



Surveillance System



Medical Devices



Automation Equipment



Industrial Computer



POS

### Enterprise Series

Products

Applications



Sever



Memory



SSDs



Embedded



Memory



SSDs



Memory



SSDs



## Major Suppliers



Rigorous solution to select original high quality chips only





## Major Customers

lenovo 联想

中科曙光  
Sugon

inspur 浪潮

清华同方  
TSINGHUA TONGFANG

Unic

Haier

COSIC

Huanghe

超越申泰

BITLAND  
宝龙达

宝德  
PowerLeader

EVOC

STAR-NET  
星网锐捷

INESA

实达  
START

Hisense

ECS ELITEGROUP  
精英电脑

桑达®

ASUS®

TRUST  
i(10) 百信

## Professional Team

Professional R&D  
team



High Quality



Professional Technical Support



## R&D System

Kimtigo has a sound R&D system, and has R&D centers in Shenzhen, Shanghai and other places to help the overall layout of the industry. The technology leaders come from well-known companies and institutions, and the core backbone has more than ten years of experience in the industry. Kimtigo attaches great importance to the accumulation and protection of intellectual property rights, and has its own core technology at all levels.



200+ R&D employees



Multi-site R&D Center  
Integration of research and production  
High quality control output



Master the core technology  
200+ independent intellectual property rights  
140+ patents have been reviewed and authorized

## Laboratory platform

A complete range of test platforms guarantees the compatibility verification of products on different platforms. The laboratory platform supports Windows, CentOS, UOS, Redhat and other systems, and is mainly used for compatibility testing, function testing, performance testing, stability testing, etc., to conduct targeted verification of important domestic platforms.



## Test Equipment

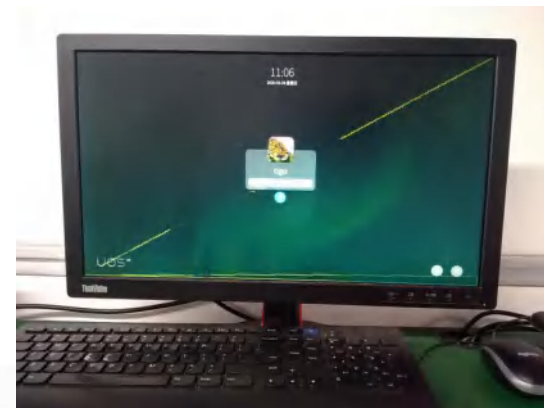
Phytium 2000



Loongson 3A3000



UOS System



Loongson 3A4000



Sugon



Professional Memory Test Equipment-- KT4MG

DC Parameter Test、RMT Parameter Test 、BTT Parameter Test 、AC Parameter Test

## Test Equipment



Constant temperature high temperature cabinet

Programmable constant temperature and humidity test chamber

## Oscilloscope

Signal analysis of test current waveform, frequency, voltage intensity, timing, etc.



## Point Thermometer



Verify the reliability test and test the surface temperature of the chip when it is working.

## Logic Analyzer

Monitor the logic level (high or low) of the hardware circuit when it is working, and analyze the errors in the circuit design.



## Protocol Analyzer



Test the communication of the device sending and receiving of data and the judgment of response data, and verifies the correctness of the protocol implementation.

## World-class production line



### Shenzhen Headquarter

- DRAM, Flash, SSD, memory, customized products
- High-performance chip screening machine
- 3 high-speed SMT production lines
- 6 DDR, 4 SSD high-performance test lines
- Monthly production capacity 650k pcs



### Nanning Branch

- Meet the needs of enterprise-level, high-volume product production
- High-performance chip screening machine
- Automated production workshop
- Automated and precise detection
- Fully controllable and traceable



### International certification:

- ISO9001 - since 2015
- ISO14001 – since 2015
- OHSAS18001 - since 2015
- ISO45001 - since 2018

# Production Equipment



**Printer 印刷机**



Repeat alignment accuracy  $\pm 0.010\text{mm}$   
 The shortest period is 8 seconds  
 Maximum support 750\*750 steel mesh  
 Equipped with a custom cleaning system



**SPI**



Double projection light + 2D ring  
 Light Source Resolution up to 10um  
 3D stereo image display  
 Equipped with SPC project management system



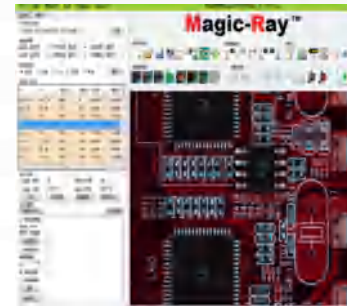
**SMT**



The fastest CPH reaches 196,000  
 Minimum support metric 0201mm  
 Support up to 80 kinds of tapes  
 Accuracy can reach  $\pm 25\mu\text{m}$



**AOI**



RGB+W four-color ring light source pad  
 positioning + FOV auxiliary positioning  
 Complete offline programming and  
 real-time debugging of DIP parts solder  
 joint special algorithm



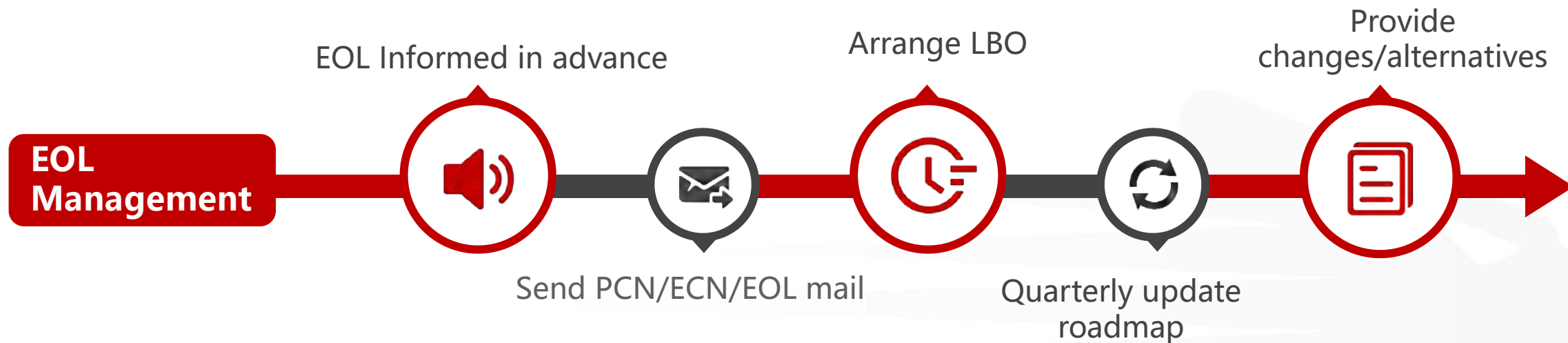
**Reflow Oven**



The highest temperature reach 350 °C  
 Equipped with 10 heating temperature  
 zones PCB width up to 457mm  
 Temperature control accuracy up to  
 $\pm 0.5\text{ }^{\circ}\text{C}$



## Sufficient inventory , stable delivery



## Customized service



- 1 BOM Confirmation / FW Confirmation
- 2 Customized label
- 3 Customized Logo
- 4 Data preload service (SSD)
- 5 Customized memory PCB 30u" thickness gold pin
- 6 Customized firmware settings(SSD)
- 7 Other special customized requirements ...

# CONTENT

01

Who we are

02

Advantages

03

Products Introduction

04

Plan & Mission

# DDR3



**DDR3 UDIMM**  
2GB/4GB/8GB



**DDR3 UDIMM**  
4GB/8GB



**DDR3 SODIMM**  
2GB/4GB/8GB



**DDR3 SODIMM**  
4GB/8GB

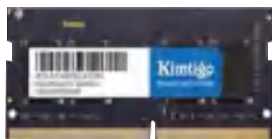
# DDR4



**DDR4 RDIMM**  
16GB/32GB



**DDR4 VLP RDIMM**  
16GB/32GB



**DDR4 SODIMM**  
4GB/8GB/16GB/32GB



**DDR4 UDIMM**  
4GB/8GB/16GB/32GB



**DDR4 ECC UDIMM**  
16GB/32GB/64GB

# DDR5



**DDR5**  
16GB



**DDR5**  
16GB 4800MHZ

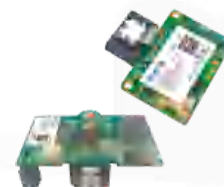
# Solid State Drive (SSD)



**2.5" SATA SSD**  
128GB-1TB



**PCIe U.2 SSD**  
400GB-1.92TB



**SATA DOM**  
16GB-512GB



**PCIe M.2 SSD**  
128GB-2TB



**M.2 SATA SSD**  
32GB-1TB



**mSATA SSD**  
16GB-512GB



**PCIe AIC SSD**  
512GB-2TB

# eMMC



**eMMC**

8GB/16GB/32GB/64GB



**eMCP**

16GB+8GB(x32) 16GB+16GB(x32)



**LPDDR3**

4GB/8GB/16GB



**MCP**

4GB+2GB  
4GB+4GB



**UFS3.0**

64GB/128GB



**BGA PCIe SSD**

64GB/128GB/256GB/512GB



**LPDDR4**

8GB/16GB



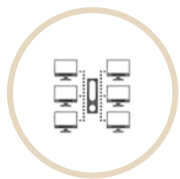
# Product application field



laptop



Desktop



Network



Monitor System



Medical Instruments



Automation Equipment



Server



Smart Phone



Wearable device



Set-top Box



Auto



POS

# CONTENT



Who we are



Advantages



Products Introduction



Mission

**Mission**



Accelerating human thinking  
Leaving a beautiful memory for the world

**Vision**



Reliable data storage partner, became the  
world's 499th

**Values**



Unity, Professionalism, Innovation, Sharing

